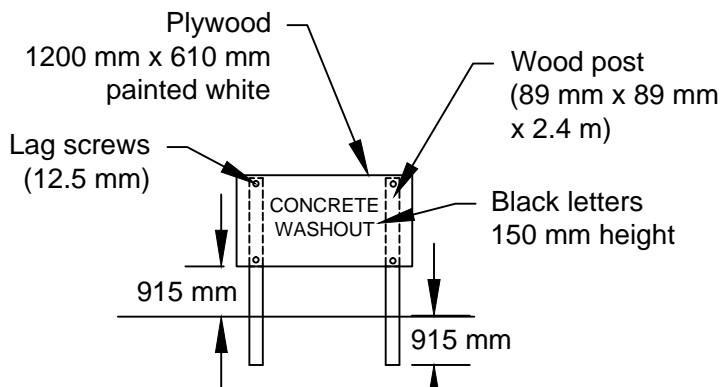
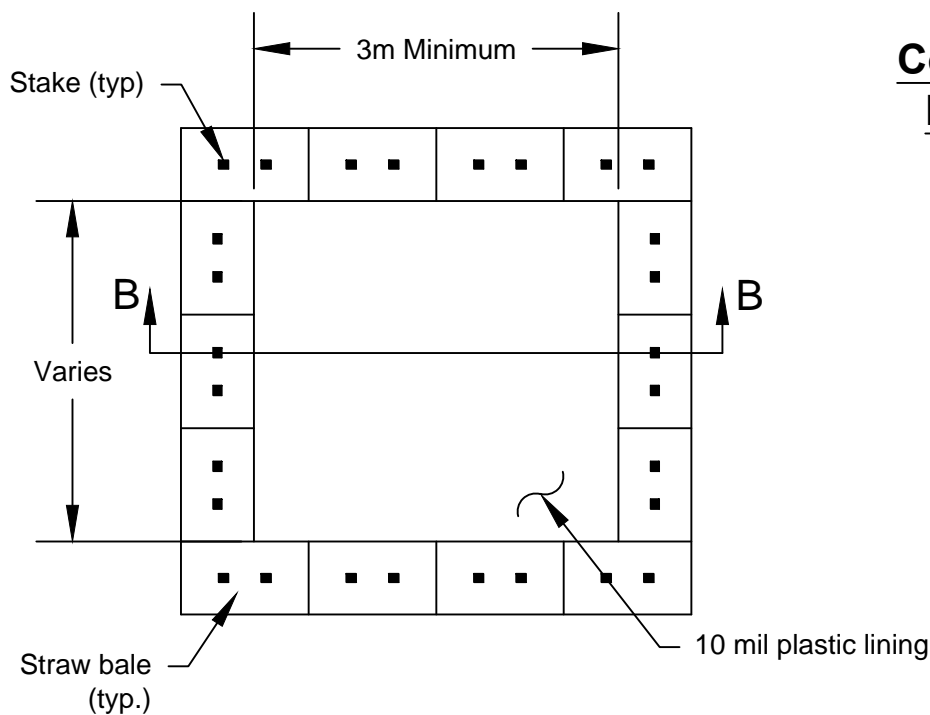


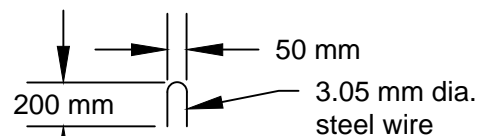
Section B-B



Concrete Washout Sign Detail (or equivalent)



Plan



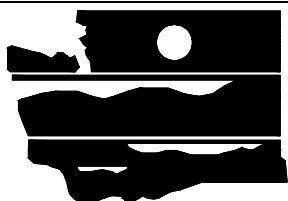
Staple Detail

Notes:

1. Actual layout determined in the field.
2. The concrete washout sign shall be installed within 10 m of the temporary concrete washout facility.

Type "Above Grade" with Straw Bales

NOT TO SCALE



DEPARTMENT OF
ECOLOGY
State of Washington

Concrete Washout Area with Straw Bales

Revised June 2016

Please see <http://www.ecy.wa.gov/copyright.html> for copyright notice including permissions, limitation of liability, and disclaimer.